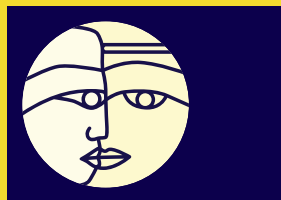


Weaving the threads of wellbeing together

Mental Health, Addiction, Disability Nurses
responding with hope for the future

NZCMHNurses Conference Programme

1st and 2nd October, Whitireia New Zealand, Porirua



www.nzcmhn.org.nz

Weaving the threads of wellbeing together

The College board in collaboration with the Wellington branch are proud to announce our theme for 2019: **Weaving the threads of wellbeing together**.

The threads of wellbeing are unique to each person, their family and their whānau. The yellow thread exemplifies how hope supports people with their goals and aspirations for wellbeing. We will work with people to weave the threads of their wellbeing together.

The future ahead signals the need for a broader workforce to support people with their health and wellbeing. This yellow thread of hope will be woven by many. Nurses skilled in supporting people with mental health, addiction issues and people with disabilities; and skilled in supporting their families and whānau and their communities, will be part of the future workforce providing services in a range of settings.

Our programme has evolved. Please check out our line up of speakers and workshops on our website.

Registrations are now open so check out the website:
<https://www.nzcmhn.org.nz/News-Events/2019-Conference>.

Registrations close on 20 September so be in quick!

Members please use log in to ensure you receive the members' rate! We also have a special rate for non-waged, Kuia, Kaumatua, retired nurse, student nurse, new graduate, service user/ tangata whai ora.

Monday 30th September

4-6pm Registration desk open

5pm Free film showing- Healing Voices - Lets change the conversation (1.5hrs) followed by a discussion with Matt Ball (conference keynote speaker)

Day 1 - Tuesday 1st October

- 8:00am **Powhiri** – Please arrive by 7.45am
- 9:00am **Morning tea**
- 9:30am **Opening speakers**
Tony Heyward and Menetta Te Aonui, Conference convenors
Chris Gosling, Chief Executive of Whitireia and WelTec
Margareth Broodkoorn, Chief Nursing Officer, Ministry of Health
Nigel Fairley, General Manager for Te-Upoko-me-Te-Karu-o-Te-Ika - Capital & Coast, Hutt Valley and Wairarapa DHBs Mental Health, Addictions and Intellectual Disability Services
Dame Margaret Bazley, Patron of Te Ao Māramatanga -NZCMHNurses
- 10:30am **College address:** Te Ao Māramatanga -NZCMHNurses: President Suzette Poole and Kaiwhakahaere Chrissy Kake
- 10:50am **Short break**
- 11:00am **International keynote speaker:** Matt Ball - Mental Health Nurse Practitioner
- 11:30am **National Speakers**
Dr. Maria Baker, Pouwhakahaere Matua (CEO) Te Rau Ora
Dr. Sione Vaka, Senior Lecturer at Auckland University of Technology
Robyn Shearer, Deputy Director General of Mental Health and Addiction – Ministry of Health
- 12:30-1:30pm **Lunch**
- Concurrent sessions – six streams**
- 1:30pm Session 1
- 2:00pm Session 2
- 2:30pm Session 3
- 3:00pm **Afternoon tea**
- 3:30pm **Plenary session:** Kites Trust
- 4:30pm **Closing address:** Kevin Allan, Mental Health Commissioner, Health and Disability Commission
- 4:40pm **Celebration farewell:** Wellington branch hosts
- 4:50pm **Poroporoaki**
- 5:00pm **Nibbles and drinks**
- 5:45pm **Fellowship Investiture ceremony of Te Ao Māramatanga:** NZCMHNurses
Host: Vice President Hineroa Hakiaha
Guest speaker: Simon Phillips
- 6:30pm **Dinner, hosted by:** Tane Rangihuna
- 7:30pm **Socialising**
- 9:00pm **Close**

Day 2 - Wednesday 2nd October

- 7:30-8:30am **Te Ao Māramatanga - NZCMHNurses College AGM breakfast meeting (members only)**
- 8:45am **Karakia to open the day**
- 9:00am **Workshops commence:**
Full day workshop- Solution Focused Therapy
Half day morning workshops:
- Assessment and treatment of substance use disorders
 - Making contact with psychosis: weaving together the threads towards a humane approach
 - Equally Well
 - Disability Nurses Branch workshop
 - On the frontier of mental health nursing: Are we fit for the future?
 - Mahi tahi tatau ki nga tohutohu, We will work together in what we are achieving
- 10:30am **Morning tea**
- 12:00pm **Morning half day workshops conclude**
Lunch
- 1:00pm **Workshops commence:**
Full day workshop continues
Afternoon half day workshops:
- Primary Mental Health and Addiction Credentialing Programme with Lois.
 - NESP- Nursing
 - Mental health, addiction, disability nursing- now and future
 - Which came first the addiction or the mental health problem?
 - Working with lived experience using co-design principles
- 2:00pm **Afternoon tea**
- 3:00pm **Workshops conclude**
- 3:10pm **Karakia to close this day**

NB: Following receipt of your registration we will contact you to discuss your workshop choices.